



*High Weald Lewes Havens  
Clinical Commissioning Group*

# Connecting 4 You Programme Update

**East Sussex Health Overview and Scrutiny Committee**

Ashley Scarff

Director of Commissioning & Deputy Chief Officer

NHS High Weald Lewes Havens CCG

29<sup>th</sup> June 2017





# Connecting 4 You



**A partnership between health and social care;**

***Joint programme to transform local health and social care services in the High Weald, Lewes and the Havens***

- Population based
- Commissioners and providers
- Integrated care



# The Connecting 4 You partnership



## 1. High Weald Lewes Havens CCG

- General Practice / Primary Care



## 2. East Sussex County Council (ESCC)

- Children's services
- Adult Social Care services
- Public Health



## 3. Sussex Community Foundation Trust



## 4. Sussex Partnership NHS Foundation Trust



## 5. Healthwatch East Sussex



## 6. Lewes and Wealden District Councils

## 7. Voluntary and independent sector partners

## 8. Other NHS acute and community trusts

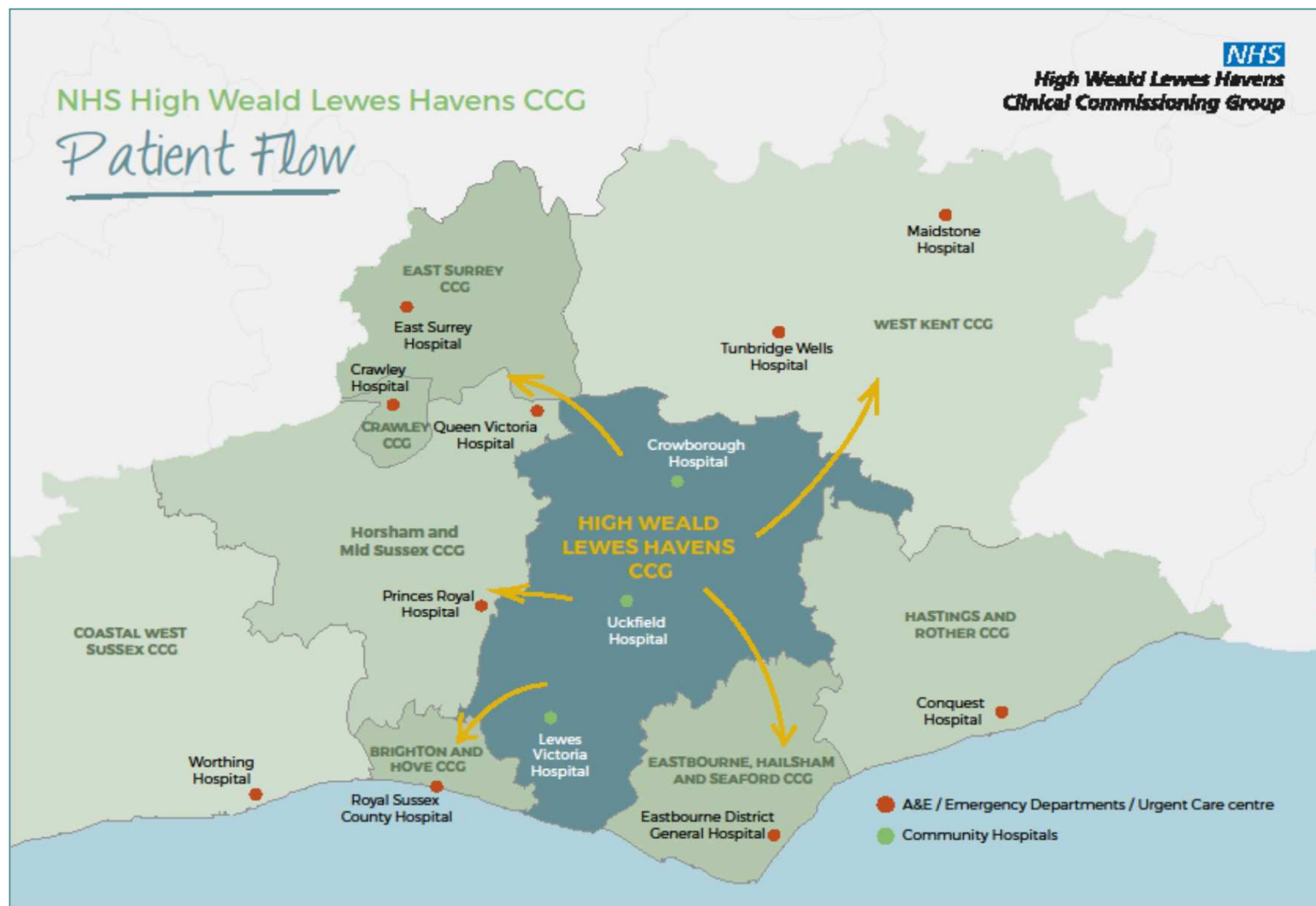


## What will Connecting 4 You do?



- Develop a **transformation programme** to meet the specific needs of the HWLH population
- Develop and introduce a new **‘community model of care’** for HWLH
- Develop **‘system leadership’**, allowing leaders across the HWLH health economy to:
  - Oversee and monitor the ‘whole system’ of activity
  - Hold the system and each other to account for delivery

# Recognising Patient Flows





# Demographic Challenges

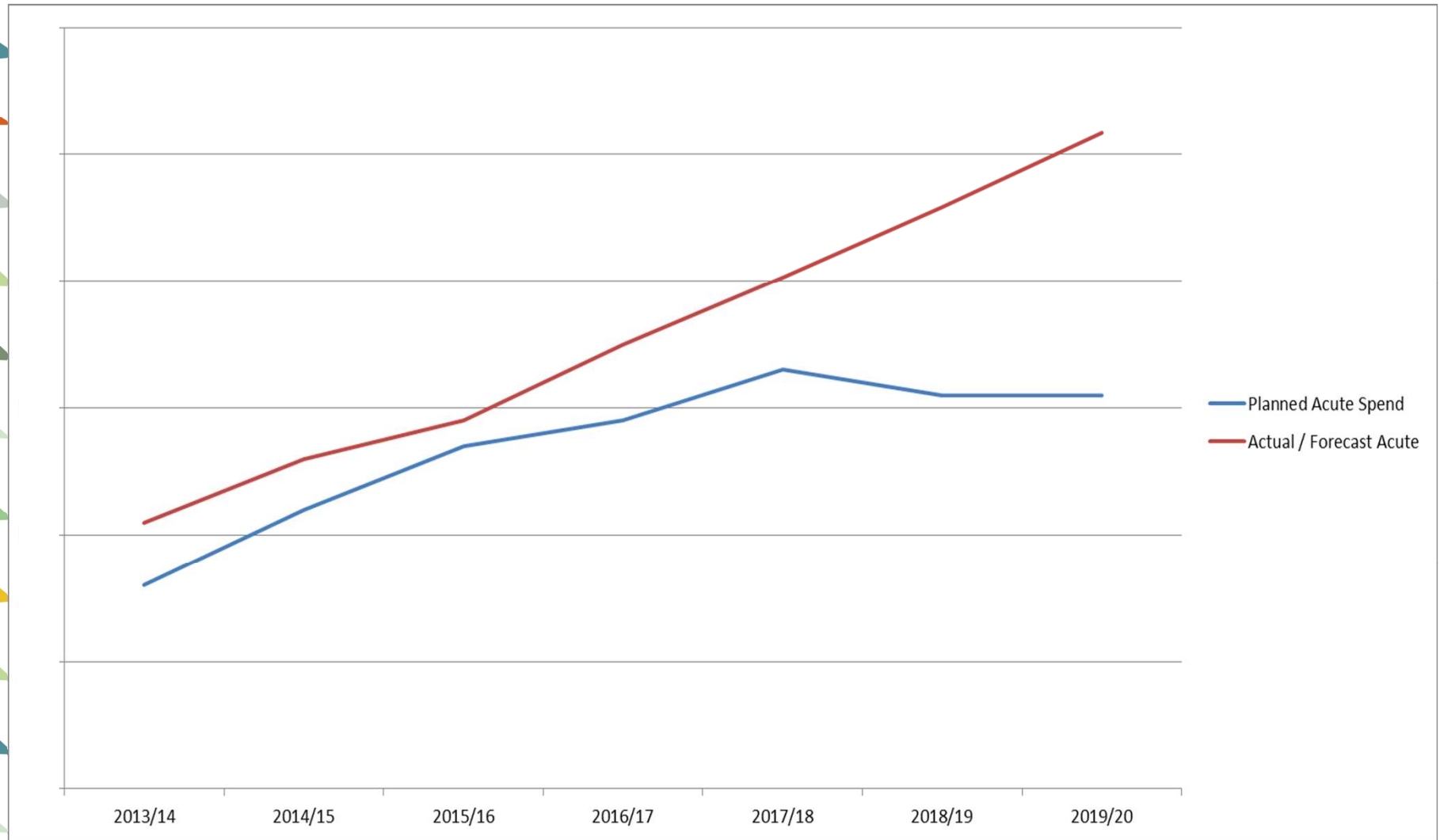


- **Geography** - High Weald, Lewes and the Havens is a large area without an acute hospital.
- **Local needs** -
  - An older than average population,
  - High levels of frailty / complex needs,
  - Pockets of poverty and health inequalities
- **Complexity** - Often, patients struggle to understand their health and care services, as different organisations are responsible for different stages of their care

## Key priorities

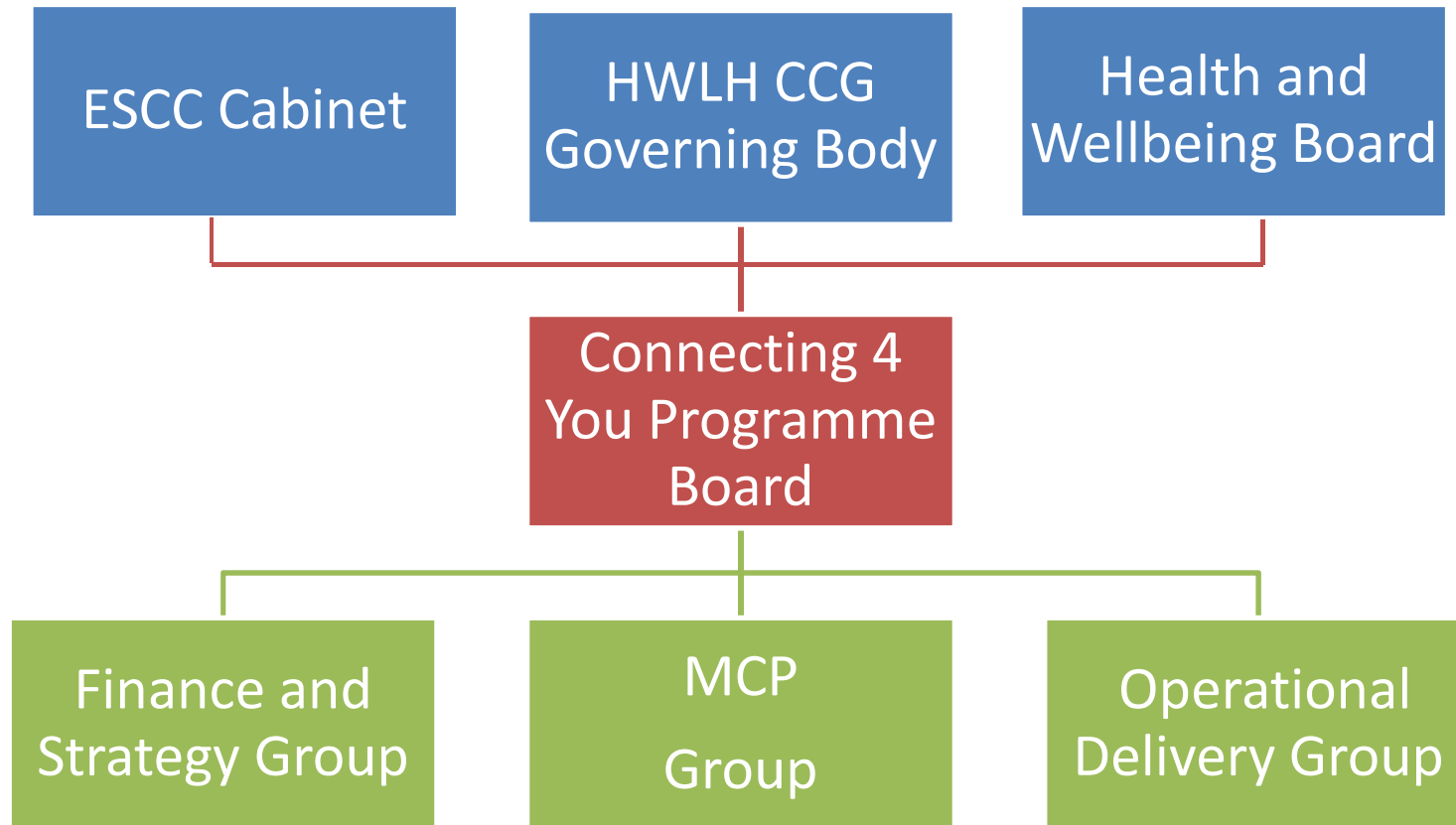
- Coordinated prevention and self-management
- Single/‘streamlined’ point of access
- Integrated community NHS and social care teams
- Joint urgent out-of-hospital care approach and interface with locality work
- Strategy for accommodation and ‘bed based’ care: Community Hospitals and nursing/EMI care homes
- Joint mental health strategy (including Dementia)
- Review children’s services: SEND; services for autism; role of community paediatricians; CAMHS; etc.
- Plan workforce and capacity
- Joint / integrated planning/locality planning

# Economic Case for Change





# Connecting 4 You Governance



## Operational Delivery Group

The purpose of this Group is to oversee, coordinate and support the design and operationalising of the four Communities of Practice

## Finance and Strategy Group

The agreed objectives of the group are to oversee:

- Control on Current Investment
- Develop a detailed spending profile of each of the four Communities of Practice
- Development of the Strategic Investment Plan for HWLH

## MCP Group

Forum to oversee the shape and development of a Multi-specialty Community Provider model for HWLH



# Communications and Engagement

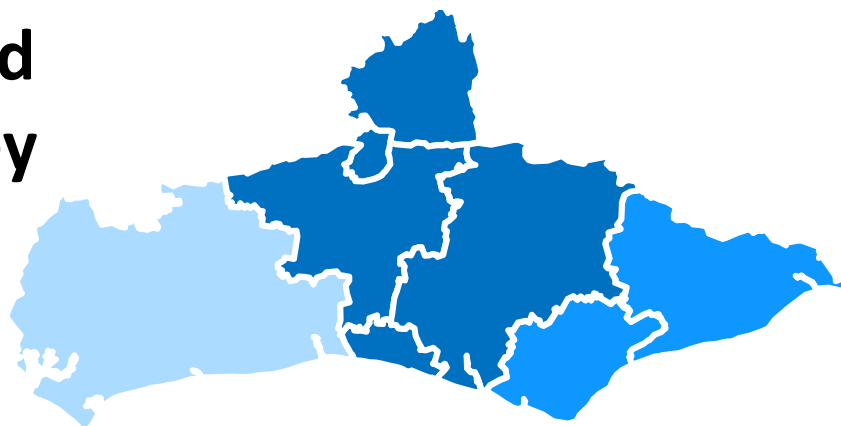


- Production of a Connecting 4 You Communication and Engagement Strategy by HWLH / ESCC in conjunction with partners
- Multi-Stakeholder Planning and Partnerships Forum; launch event - January 2017
- Public engagement events - September 2017
- Working with existing groups to plan method of co-design e.g. PPGs, Partnership Boards, Speak-Up & ESSA

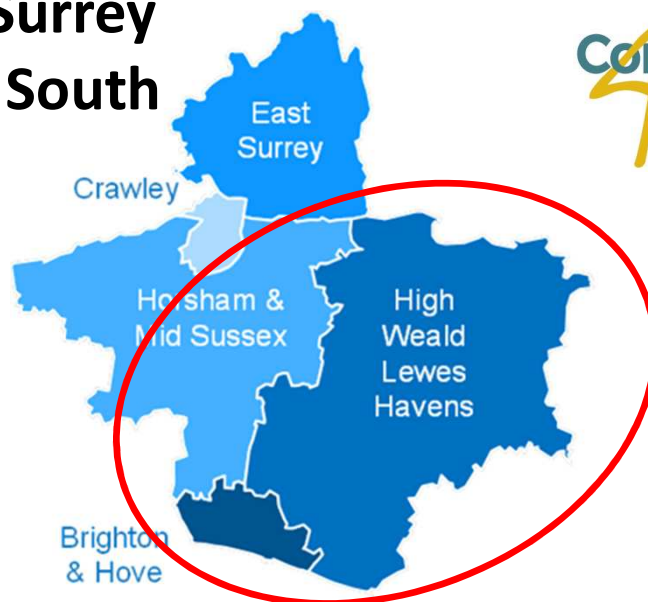
# Different Levels of delivery



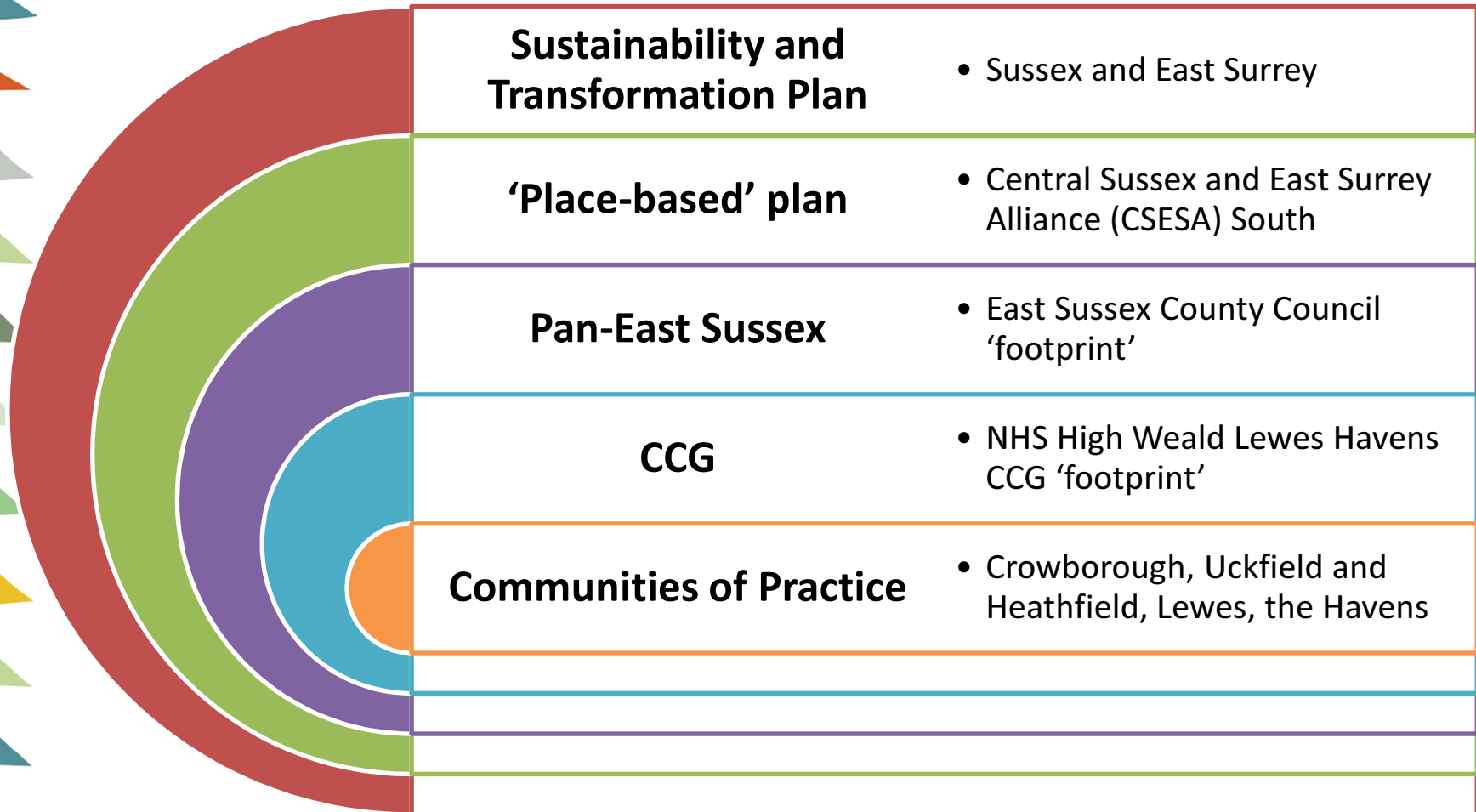
**Sussex and  
East Surrey  
STP**



**Central Sussex  
and East Surrey  
Alliance - South**



# Planning Footprints





## Next Steps

- Secure out of hospital transformation programme for HWLH population
- Consider changing commissioning landscape
- Increased focus to work at scale in a way that is greater than the sum of the parts
- Development of 'Place-Based' working – CSESA – South as part of the STP
- Determine appropriate level to secure delivery of transformational change across different planning footprints
- Confirm future optimal ways of joint working – Autumn 2017



*High Weald Lewes Havens  
Clinical Commissioning Group*

Thank you  
Any Questions?

